

Whirlwind's Adobe Settings for 2011

1. Go to: <http://www.whirlwindprint.com>



WHIRLWIND

Home

About Us

Services

Catalogue

Tech help

Promotions

News & events

Contact

it's WHIRLWIND

It's. Our new website.

Online ordering. New features. Latest print information.
Your total print solution, starts now...

View Our Catalogue

More Info

new. bold. shiny.

In the Spotlight

Making news & getting hits



Supporting World Environment Day!
Whirlwind are supporting World E...



Love the environment

News stocks & certification!



We're on film!

Take a look...



We're Accredited

And have 5 to prove it!



We constantly review, upgrade and assess our environmental impact and responsibilities and certifications, green paper stocks and eco friendly practices.

My Print

Login to access Print Central or to order

Username

Login

Create free account

Help

Most Popular Products

See what's flying out the door



150gsm gloss flyers
Outstanding colour and image results with durability.



Free newsletter

Like the sound of promos and discounts?

Email Address

Enter your email address to subscribe to the Whirlwind Newsletter

Subscribe

Unsubscribe

Cast Your Vote

Tell us what you really think!

Do you like our new website?

- Awesome. Love it!
 Not bad. Pretty cool.
 Its almost there!

Vote

View results

WHIRLWIND

2. From the Tech Help tab, select Artwork Setup





- Home
- About Us
- Services
- Catalogue
- Tech help
- Promotions
- News & events
- Contact

- Artwork & File Setup
- Stock & Finishes
- Order & Delivery
- Online & About Us

it's WHIRLWIND

It's. Our new website.

Online ordering. New features. Latest print information.
Your total print solution, starts now...

View Our Catalogue

More Info

new. bold. shiny.

In the Spotlight
Making news & getting hits

[Test Youtube embed](#)
Test Youtube embed

Love the environment
News stocks & certification!

We're on film!
Take a look...

We're Accredited
And have 5 to prove it!

We're committed to a safe workplace, by monitoring and maintaining OH&S standards and adhering to safety management for all employees.

My Print
Login to access Print Central or to order

Username

.....

Login Create free account Help

Most Popular Products
See what's flying out the door

12 page booklet (self cover)
Annual reports or product manuals, booklets fit the bill.

Free newsletter
Like the sound of promos and discounts?

Email Address

Enter your email address to subscribe to the Whirlwind Newsletter

Subscribe Unsubscribe

Cast Your Vote
Tell us what you really think!

Do you like our new website?

Awesome. Love it!
 Not bad. Pretty cool.
 Its almost there!

Vote View results



3. Scroll down to Preparing Print Ready Files and click on Pre Print Check List



Poll

Love the environment
News stocks & certification!

We're on film!
Take a look...

Preparing Print Ready Files

Pre Print Check List

Here is a quick guide about setting up your print ready files,

Sizes & Templates

Artwork Sizes

Whirlwind standard sizes, contact us for all custom-sized requirements.

Templates

a smooth process from artwork creation to the final delivery of your printed product.

New Forme Cuts & Dielines

Design your forme cuts and dielines with us is simple..

Envelope Sizes & Templates

We provide a range of stocks, sizes and sealing for your envelopes.

Proofing Options

Soft proof

Our online proofing system makes it so easy to soft proof your print job.

Hard Proof

An indicative EPSON digital proof to show colour representation.

Combined proof

A combination of soft and hard proof.

Colour Matching

Check with us when you want to colour match your print jobs.

Whirlwind knowledge base

Please select from the categories below the area you would like to access help from. Each of these categories will provide you specific information on your choice and you can always come back to this page to further refine your search.

Artwork Setup & Set up
[Preparing Print Ready Files](#)
[Sizes & Templates](#)
[Proofing Options](#)

Stock & Finishes
[Stock Selector](#)
[Product Finishes](#)
[Printing with an FSC Logo](#)

Order & Delivery
[Freight Options](#)
[Order Options](#)
[Payment Options](#)

Online & About Us
[Create Free Account](#)
[Online Security](#)
[Whirlwind Certifications](#)



4. Scroll down to File Format and click the link to download our Adobe settings for 2011





Naming your file:

Clear and concise naming will ensure a smooth print process. So to begin with make your file name descriptive, but keep it short and sweet for example: Acme company are sending us their business card so they name the file ACME_BC.pdf. Please try to include only alphanumeric characters and limit the total length to a maximum of 16 characters.

Supply in CMYK mode:

You will have more control over the final appearance of your print job if you convert all of your images from RGB to CMYK before sending them to us.

Best resolution?

Resolution is the number of pixels within an image. The higher the resolution, the better the picture, however if you have too high a resolution it is not utilised and makes your files too large. We suggest making your artwork at 300dpi when it's at full size.

Resolution has an inverse relationship with size – if you enlarge an image you lower its resolution and conversely, if you reduce an image you increase its resolution. How an image is originally attained will determine its resolution and what size it can be printed at in order to be clear and crisp.

Ink coverage

The maximum ink coverage possible in our printing process is 400% - however, if we were to print a file with this amount of ink coverage, the ink would never dry!

That is why we recommend the maximum coverage is 300% for [coated stocks](#) and 260% for [uncoated stocks](#). This means the colours that you use should contain less than a total of 300% (or 260%) when you add together cyan, magenta, yellow and black.

Here's a trick: If you are looking for a deep, rich black, the best combination is 100% K and 40% C – we love this stuff! Please note: this is for areas 30mm square or larger, excluding text.

File format

We accept all industry standard programs - Adobe Creative Suite and Quark Xpress. We do however require print ready PDF files created to our own specifications. Files provided in another format will require our operators to complete a manual change and may incur a nominal charge. [Download our Adobe Settings for 2011.](#)

You can view our [step by step introduction](#) to download and set up the Adobe Settings for 2011.

Always outline or embed your fonts

Outlining or embedding the fonts that you use in your files means we can print them even if we don't have those particular fonts installed on our computers and they will look exactly the way you want them to.

Remember you must have a license to embed certain fonts, please don't send fonts on a disc with your print job – it is not legal.

Spot colours

If your job is cmyk please remember to remove unwanted spot colours or convert them to cmyk.

We hope this section has proved useful in helping you prepare your files, however, if you are still needing more information or have a specific questions, then please feel free to [contact us](#) and don't forget to visit our [Tech Help](#) – the answer to your question may also be there.

Talk to us now!

Melbourne
T. 03 9780 4444
F. 03 9780 4445

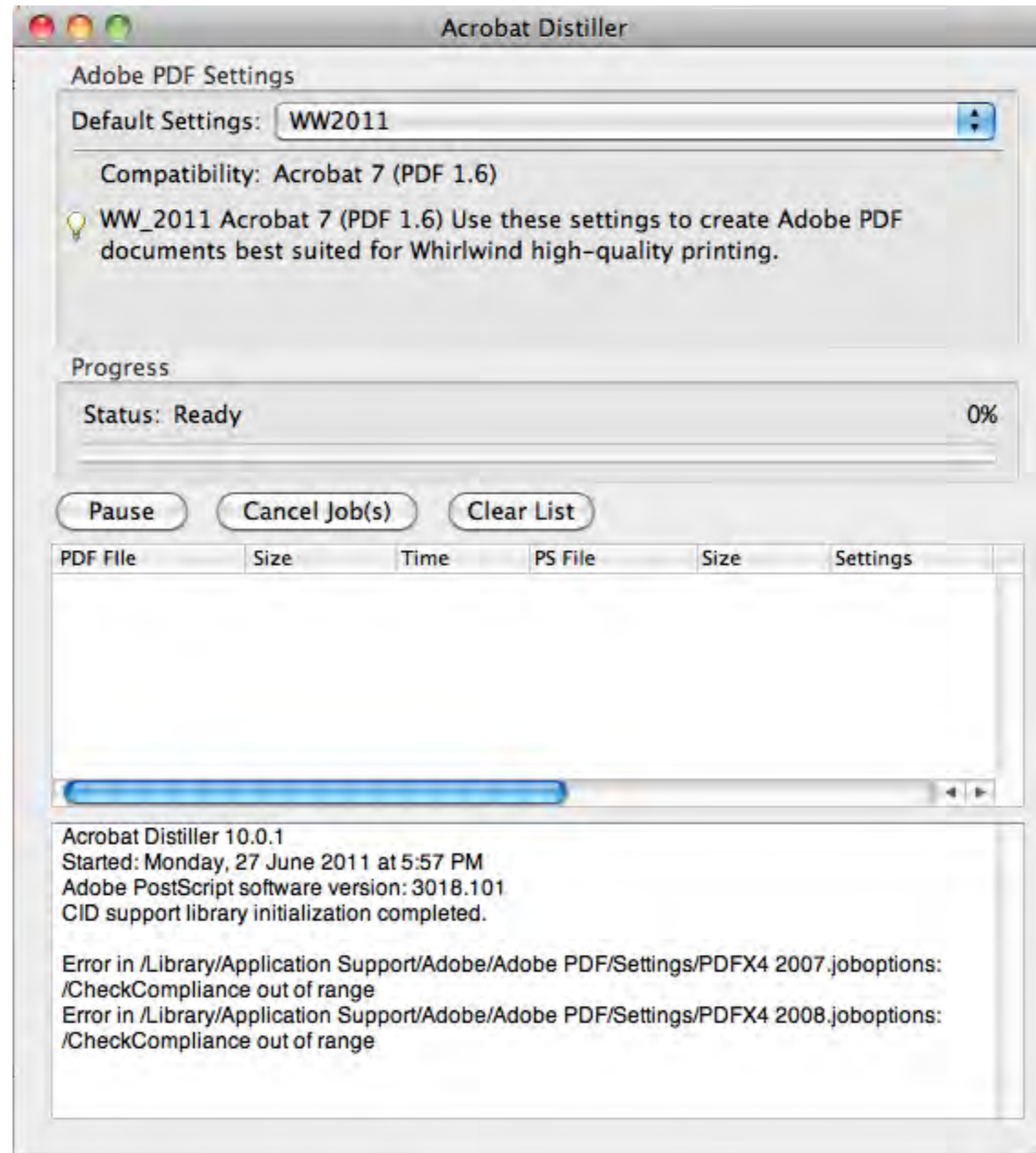
Sydney
T. 02 9368 5888
F. 02 9368 5889

We'll call you!

Please enter the following

5. Unzip the downloaded file and double click the enclosed item to load the settings into Acrobat Distiller.





6. Whirlwind's Adobe Settings for 2011 are now available in all Adobe Creative Suite applications.



